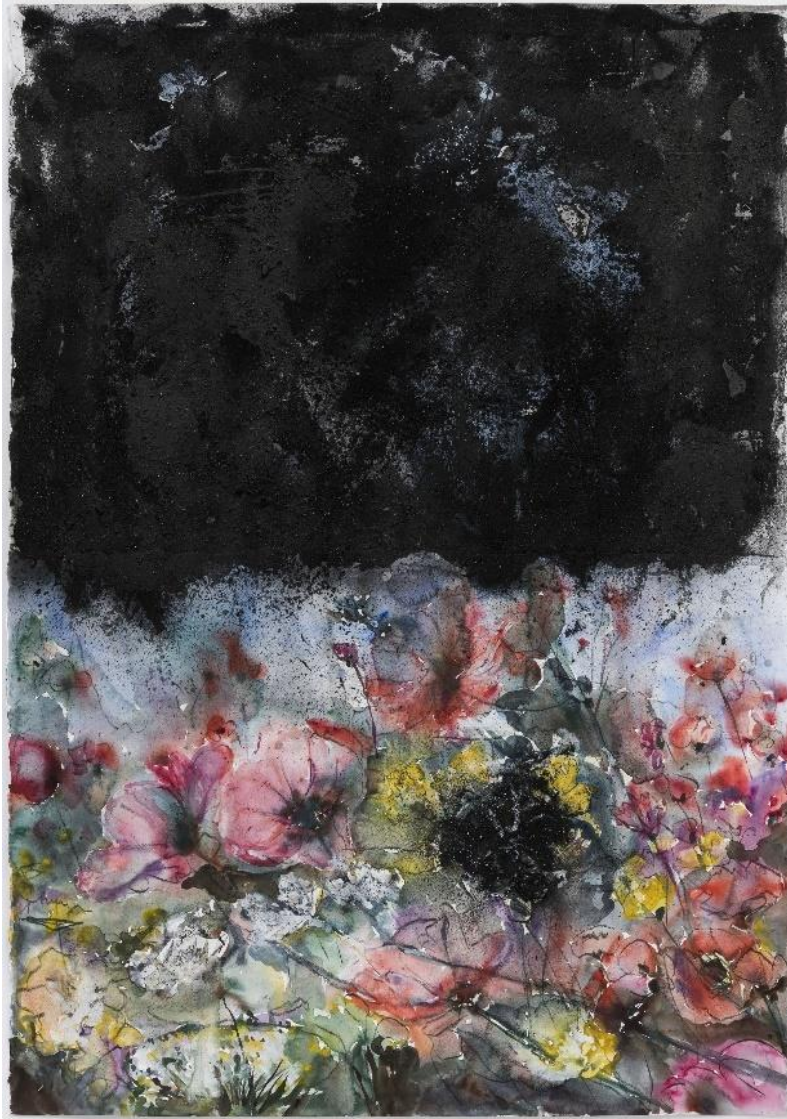


# PRESS KIT

## ANSELM KIEFER – WATERCOLOURS

7 May to 31 August 2025

Anselm Kiefer, ›When the Flowers Spring Out of the Grass‹, watercolour on paper, 2015,  
© Anselm Kiefer, Courtesy Galerie Bastian, Berlin, Photocredit: Charles Duprat, Paris



**Nolde.**  
NOLDE MUSEUM  
SEEBÜLL

# ANSELM KIEFER – WATERCOLOURS

7 May to 31 August 2025

## Anselm Kiefer as a Guest at Seebüll

The Nolde Museum Seebüll presents the first watercolour exhibition by Anselm Kiefer in Germany. From 7 May to 31 August 2025, 21 selected works by the internationally renowned artist will be on display at the Nolde Museum Seebüll. The exhibition marks a significant moment in the nearly 70-year history of the Seebüll Ada and Emil Nolde Foundation. For the first time since Emil Nolde's death in 1956, a contemporary artist is hosted at Seebüll.

The encounter between Anselm Kiefer and Emil Nolde takes place through the medium of watercolour - a technique that both artists have shaped in remarkable ways. While Nolde is celebrated as a master of watercolour for his luminous worlds of colour, Kiefer uses watercolour to address profound historical and philosophical questions. His works reflect themes such as identity, myth, and transience, condensed into an impressive visual language. With his art, Kiefer confronts the past and offers answers to the ethical questions of the present.

The unvarnished view of Emil Nolde reveals a complex personality. He was a staunch supporter of the National Socialists and yet also a victim of Nazi art policies. His works were defamed in the propaganda exhibition ›Degenerate Art‹ in 1937, but he continued to hope for recognition from the Nazi regime. After World War II, he smoothed out these contradictions in his life story. The Seebüll Ada and Emil Nolde Foundation adopted this perspective. Today, the Nolde Museum Seebüll presents the full picture: the radiant power of his art as well as the multifaceted biography. Nolde, along with his foundation, is part of Germany's post-war history—a history long marked by suppression and embellishment. His work and its reception are an important part of 20th-century German cultural history.

Anselm Kiefer, by contrast, consistently addresses Germany's past. He relentlessly explores questions of identity, nationhood, and the memory of war and the Holocaust. His works are monumental and profound, confronting history against the act of forgetting. »Anselm Kiefer has denied us Germans the opportunity to escape our history for five decades,« Florian Illies stated in his laudatory speech at the awarding of the German National Prize 2023. He further noted, »His works remind us that it is by no means certain that we are moving from the past toward the future.« This uncompromising reflection makes Kiefer's art so poignant—and lends it special significance, particularly in Seebüll.

Emil Nolde himself collected works by artists he admired. Since his collection was lost in a fire during the war in his Berlin apartment, it is largely unknown. With the exhibition ›Anselm Kiefer – Watercolours,‹ this tradition in Seebüll is being continued—as an artistic dialogue between two eras. Through an intensive selection process, Anselm Kiefer has assembled works from various creative periods for this unique encounter.

The exhibition opens up a new perspective on watercolour painting and enables an exciting dialogue between Expressionism and Modernism. »Anselm Kiefer – Watercolours« represents an artistic bridge spanning over a century.

»With Anselm Kiefer, we are showcasing an artist in Seebüll whose works set global standards,« said Dr. Christian Ring, director of the Nolde Museum. »His watercolours are more than artworks – they open a window into deeper dimensions of being.«

Dr. Hans-Joachim Throl, chairman of the board of trustees of the Nolde Foundation, added, »We are pleased to present the first watercolour exhibition of Anselm Kiefer in Germany here in Seebüll.«

With »Anselm Kiefer – Watercolours«, the Nolde Museum Seebüll invites visitors to rediscover the works of Anselm Kiefer and Emil Nolde in a unique context.

The »Watercolours« exhibition has been created in close collaboration with Anselm Kiefer and the Berlin-based Bastian Gallery.

## VISITOR INFORMATION

### Exhibition

ANSELM KIEFER – WATERCOLOURS

7 May to 31 August 2025

EMIL NOLDE – "HUMAN BEING AND ARTIST" IN BERLIN

1 March to 31 October 2025

### Opening times

1 March to 31 October 2025

Opened daily (including holidays) 10 am – 6 pm

### Contact

NOLDE MUSEUM SEEBÜLL

Stiftung Seebüll Ada und Emil Nolde

Seebüll 31, D-25927 Neukirchen

+49 (0) 4664-98 39 30

[info@nolde-stiftung.de](mailto:info@nolde-stiftung.de)

[nolde-museum.de](http://nolde-museum.de)

### Press contact

Kerrin Paulsen

+49 (0) 4664-98 39 333

[k.paulsen@nolde-stiftung.de](mailto:k.paulsen@nolde-stiftung.de)

### Admission prices

ADULTS	€ 12
REDUCED (with proof)	€ 8
GROUPS (10+ persons) per person	€ 10
CHILDREN (up to 6 years)	free
PUPILS (7 years and older) and students	€ 8
FAMILY TICKET (2 adults, 3 children)	€ 24
COMBINATION TICKET TØNDER	€ 18
in cooperation with Kunstmuseet i Tønder	
ANNUAL PASS SEEBÜLL (non-transferable)	€ 50
PUBLIC TOUR	€ 3

### Museum gastronomy >Element<

Gastronomy – Delicacies – Events

+49 (0) 4664-98 39 70

[info@element-seebuell.de](mailto:info@element-seebuell.de)

**Visit us on Instagram & Facebook and subscribe to our newsletter!**

## PRESS PHOTOS ANSELM KIEFER – WATERCOLOURS

The link to the press photos is available upon request from Ms. Paulsen at [k.paulsen@nolde-stiftung.de](mailto:k.paulsen@nolde-stiftung.de).



Anselm Kiefer, ›When the Flowers Spring Out of the Grass‹, watercolour on paper, 2015, © Anselm Kiefer, Courtesy Galerie Bastian, Berlin, Photocredit: Charles Duprat, Paris



Anselm Kiefer, ›SOLARIS‹, watercolour on paper, 2013, © Anselm Kiefer, Courtesy Galerie Bastian, Berlin, Photocredit: Georges Poncet, Paris



Anselm Kiefer, ›To the Unknown Painter‹, watercolour on paper, 1982, © Anselm Kiefer, Photocredit: Georges Poncet, Paris



Anselm Kiefer, ›Storm of Roses‹, watercolour on paper, 2013, © Anselm Kiefer, Courtesy Galerie Bastian, Berlin, Photocredit: Georges Poncet, Paris