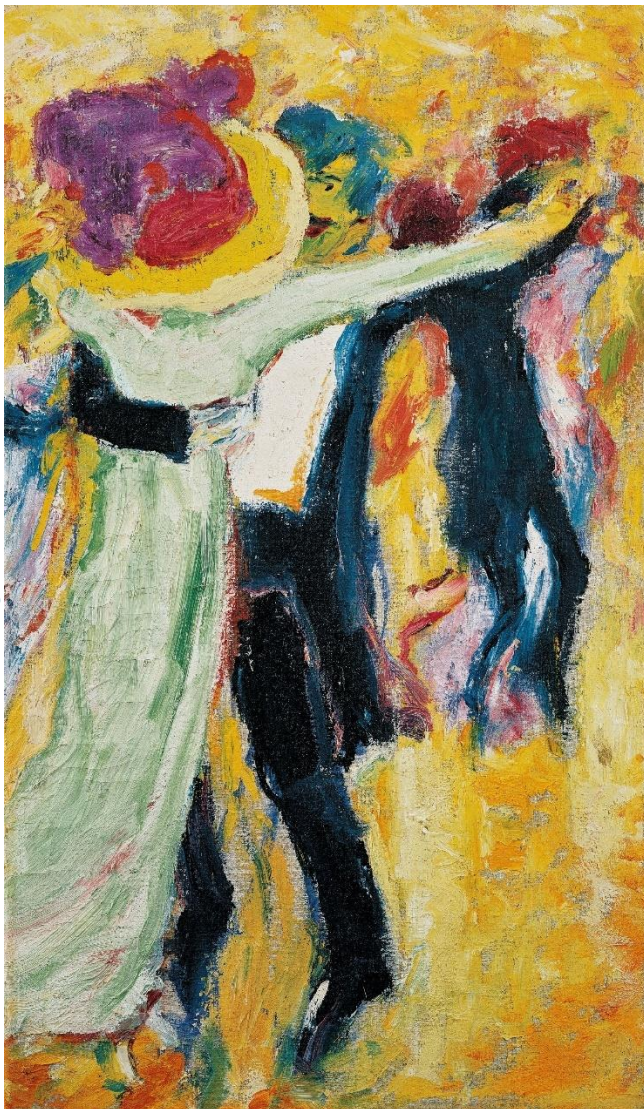


PRESS KIT

69TH ANNUAL EXHIBITION 2025

EMIL NOLDE - "HUMAN BEING AND ARTIST" IN BERLIN

1. March to 31. October 2025



Emil Nolde, "Dance II", 1911, oil on canvas, © Nolde Stiftung Seebüll

Nolde.
NOLDE MUSEUM
SEEBÜLL

69TH ANNUAL EXHIBITION 2025

EMIL NOLDE – "HUMAN BEING AND ARTIST" IN BERLIN

1. March to 31. October 2025

The 69th Annual Exhibition of the Nolde Foundation Seebüll in 2025 is dedicated to Emil Nolde's understanding of city and countryside. The alternation is central to his life: The artist spent his summers mostly in rural seclusion, and his winters in the hustle and bustle of the capital Berlin. The exciting pictures of Berlin's nightlife with dance, theater, and cabaret are juxtaposed with enchanting animal watercolors from the Berlin Zoo. In total, over 110 works showcase the full scope of Nolde, including his famous flower depictions, dynamic seas, and endless landscapes.

The prominent Expressionist Emil Nolde (1867–1956) divided his life between city and countryside, his summer residence in the current German-Danish border area, and a studio apartment for the winter in Berlin. In these two very different worlds, he found inspiration for his art: on the one hand, in his remote homeland, and on the other hand, in the vibrant metropolis. The Nolde couple spent the winter months in Berlin, renting a studio apartment on Tauentzienstraße from 1910, and later on Bayernallee in Westend from 1929.

At the beginning of the 20th century, artists were magnetically drawn to one of Europe's most important metropolises. Berlin, with its nightlife, dance, theater, and cabaret, also became a source of inspiration for Emil Nolde. Especially in the years 1910/11, he artistically engaged with the big city. Max Reinhardt, director of the Deutsches Theater and the Kammerspiele, provided Nolde with free tickets. In the dark auditorium, Nolde, assisted by Ada, painted with quick, precise brushstrokes using watercolor and ink a series of well over 300 watercolors and ink brush drawings, focused on the expressive possibilities of the figures, their movements, and dance, their gestures, and expressions. In the buoyant watercolors and radiant oil paintings, Nolde pays homage to the bustling city.

At the same time, Berlin life allowed direct contact with friends, collectors, art historians, museum directors, and gallery owners. It was the place for networking for the ambitious artist, supported by his socially adept wife Ada. He often referred to himself as a "painter person," emphasizing the distinction between artist and person, which was central to his self-concept.

Dr. Christian Ring, Director of the Nolde Museum, develops a new "Annual Exhibition" each year from the rich legacy of the artist. The theme for 2025 continues the idea of "World and Home" from 2023. Christian Ring describes his central idea: "In the annual exhibitions, we explore Nolde's rich oeuvre in all aspects of his life and examine its relevance to today. Emil Nolde was unrivaled in his ability to process the contrasts between vibrant city life and the quiet seclusion of rural life in his art," explains Christian Ring further. "With this exhibition, we not only want to provide insight into his work but also to convey the significance of these two poles for his art. In Seebüll, we want to provide, in the

spirit of the founding couple Ada and Emil Nolde, 'happiness and artistic-spiritual relaxation' to the 'seeking, spiritual wanderer from all lands.'

Since 1957, the Nolde Museum in Seebüll has been showcasing an impressive selection of about 110 works, including oil paintings, watercolors, and prints, representative of Nolde's oeuvre in its annually changing exhibition. In addition to well-known masterpieces, rare pieces from his extensive legacy are also presented. This year, 32 works are being shown in Seebüll for the first time. With the world's largest collection of his works, Seebüll is the central place to delve deeply into the creations of this significant artist.

EMIL NOLDE ON BERLIN

Emil Nolde himself vividly described the stark contrasts between the lively Berlin nightlife and the tranquility of rural life – a tension that left a lasting mark on his art. With a touch of irony, he conveyed his impressions of city life.

"Every evening at eleven, I put on my dark trousers and the black St. Gallen tailcoat, which was soon to be historic. Ada also put on her best dress, and we went to masquerade balls, cabarets, and the ice palace. Then we went to public places where pale like powder and the smell of corpses, impotent asphalt lions and hectic demi-monde ladies in their elegantly daring robes sat, carried like queens. And it went further into the cigarette smoke of the morning cafés, where newcomers from the provinces, innocently sitting with streetwalkers, half fell asleep in a champagne haze."

He described how he and his wife Ada consciously sought out Berlin's cultural life:

"We liked being there, seeking the special qualities of the big city, the best in art: concerts, theater, lectures."

However, the quiet idyll of his rural summer residence remained an important counterbalance in his life and work:

"A greater contrast to the distant summer rural life was hardly conceivable. There, the peaceful forest with the large, white, resting clouds – here, the gasoline streets and the cigarette smoke of the places."

NOLDE MUSEUM SEEBÜLL – A TOTAL WORK OF ART

The Nolde Museum Seebüll offers a unique art experience that goes far beyond a conventional exhibition visit. Located in Seebüll, near Niebüll and not far from the North Frisian island of Sylt, stands the Seebüll house and studio designed by Emil Nolde himself, originally serving as a summer residence for him and his wife Ada. Here, the artist couple created a retreat dedicated entirely to focused work and the experience of nature.

The Nolde House, built between 1927 and 1937 according to the artist's plans, is an outstanding modern artist's house. After more than sixty years of museum operation, the Nolde Foundation undertook a comprehensive monument-appropriate renovation and technical refurbishment of the house from 2020 to 2022. The living spaces retain their original, intensely colored design and, with some of the original furnishings, convey a vivid impression of the expressionist lifestyle.

The farmhouse garden created by Emil and Ada Nolde is inseparably linked to life in the total work of art. The splendid garden was designed by Nolde together with Ada. The sophisticated wind protection is fundamental so that the plants can withstand the harsh North Sea climate. Thanks to the records of Nolde's last gardener, who worked for the foundation until the 1970s, the current gardening team can maintain the garden in the spirit of the artist. The garden testifies to Nolde's passion for nature, which is reflected in his art. The original Nolde plants and their carefully cultivated offspring invite visitors to experience the garden as Nolde once designed it.

In addition, the Nolde Museum includes a modern **visitor forum** with a **museum shop** that offers an exclusive selection of Nolde-inspired products and complements the art experience. Alongside regular art and garden tours, exciting **courses and workshops** are offered in the light-flooded **painting school**, which offers an impressive view of the wide marshland. For families, there is also a whimsical playground in the outdoor area, providing joy and space for creativity even for the youngest guests.

After a tour of the museum, the **museum gastronomy** "Element," led by John Kasraei, invites you to a culinary break. Here, regional and internationally inspired dishes are served, rounding off the visit to Seebüll in a delightful way.

The Nolde Museum Seebüll combines art, nature, and culture into an impressive overall experience. Visitors from all over the world delve deep into the life and work of Emil Nolde and experience a unique encounter with the art of one of the most important Expressionists – embedded in the inspiring atmosphere of the total work of art Seebüll.

ANNUAL CERAMIC 2025: PARROT

Ceramic object inspired by Emil Nolde's watercolor "Two Parrots"

Material: Ceramic, colorfully glazed, weatherproof

Dimensions: approx. 19 x 10 x 9 cm

Template: Emil Nolde, "Two Parrots," 1923/24, watercolor, 47.2 x 34.9 cm

© Nolde Foundation Seebüll

Price: €50

Since their introduction in 2014, the annual ceramics of the Nolde Museum have achieved cult status. Each year, the exclusive collector's item delights with its unique design and high craftsmanship quality.

The annual ceramic 2025 is inspired by Emil Nolde's watercolor "Two Parrots," which was created in 1923/24 at the Berlin Zoological Garden. The vibrant yellow and blue tones of the painting are reflected in the artistic glaze.

Each piece is lovingly handcrafted by a small pottery in Schleswig exclusively for the Nolde Museum, making every annual ceramic a unique item—one of a kind like the artwork that inspired it.

The annual ceramic 2025 is available exclusively during the duration of the annual exhibition and can be purchased on-site in the museum shop.

Secure a special Nolde piece for your home!

CONCERT IN SEEBÜLL

PIANO EVENING WITH ALEXANDER KRICHEL

Wednesday, 26. March 2025, 5 pm

The Nolde Museum Seebüll invites you to a special musical evening: The internationally acclaimed pianist Alexander Krichel, ECHO Klassik award winner, will give a concert on the occasion of Prof. Dr. Volker Scherliess's 80th birthday.

With this evening, the Seebüll Ada and Emil Nolde Foundation honors the memory of the musicologist who passed away in 2022. He served many years as a member of the foundation's board of trustees and was most recently an honorary member.

Program:

Alexander Krichel will interpret masterpieces by Franz Liszt, Robert Schumann/Franz Liszt, Joseph Maurice Ravel, and Fritz Kreisler/Sergei Rachmaninoff.

Price:

- Concert ticket: €25

Ticket Sales:

Concert tickets are available during the opening hours in the museum shop of the Nolde Museum Seebüll or at the box office. For a binding reservation of concert tickets, please contact info@nolde-stiftung.de by email.

FIGURES AND FACTS ON THE ANNUAL EXHIBITION 2025

TOTAL EXHIBITS	111
<hr/>	
PAINTINGS	51
<hr/>	
WORKS ON PAPER (WATERCOLORS AND PRINTS)	54
<hr/>	
Dance, theater, cabaret	17
Animals	24
Flowers, seascapes, landscapes	8
Prints	5
<hr/>	
CERAMIC WORKS	6
<hr/>	
OF THESE, WORKS EXHIBITED FOR THE FIRST TIME IN SEEBÜLL	32
<hr/>	
Oil paintings	4
Works on paper	28

VISITOR INFORMATION

Exhibition

EMIL NOLDE – "HUMAN BEING AND ARTIST" IN BERLIN

Opening times

1. March to 31. October 2025

Opened daily (including holidays) 10 am – 6 pm

Contact

NOLDE MUSEUM SEEBÜLL

Stiftung Seebüll Ada und Emil Nolde

Seebüll 31, D-25927 Neukirchen

+49 (0) 4664-98 39 30

info@nolde-stiftung.de

nolde-museum.de

Press contact

Kerrin Paulsen

+49 (0) 4664-98 39 333

k.paulsen@nolde-stiftung.de

Admission prices

ADULTS	€ 12
REDUCED (with proof)	€ 8
GROUPS (10+ persons) per person	€ 10
CHILDREN (up to 6 years)	free
PUPILS (7 years and older) and students	€ 8
FAMILY TICKET (2 adults, 3 children)	€ 24
COMBINATION TICKET TØNDER	€ 18
in cooperation with Kunstmuseet i Tønder	
ANNUAL PASS SEEBÜLL (non-transferable)	€ 50
PUBLIC TOUR	€ 3

Tours

Individual tours of the exhibition and the Nolde Garden are available upon request. Current dates and further information can be found at nolde-museum.de.

Painting School

Courses and workshops with fixed dates from March to October. Individual group offers are available upon request. All dates and details can be found at nolde-museum.de.

Museum Shop

In the museum shop, you will find an exquisite selection of items inspired by the art of Emil Nolde. Discover stylish ceramics, high-quality art books, posters, and special accessories like elegant scarves, eyeglass cases, and much more. Each product is carefully selected and reflects the unique signature of the artist.

The museum shop is open during the regular opening hours of the museum.

Annual Booklet for the 69th Annual Exhibition 2025

The annual booklet offers a well-founded introduction to Emil Nolde's work and highlights his tense relationship between city and countryside – complemented by picture descriptions, exhibition backgrounds, and insights into the Nolde House and the garden. The annual booklet is expected to be available in the museum shop from Easter onwards.

Museum gastronomy "Element"

Gastronomy – Delicacies – Events

+49 (0) 4664-98 39 70

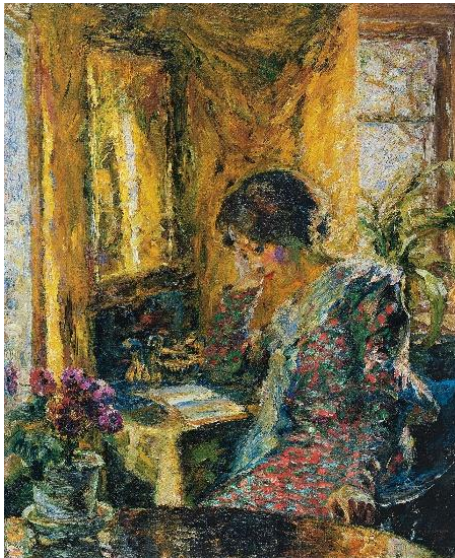
info@element-seebuell.de

Visit us on Instagram & Facebook and subscribe to our newsletter!

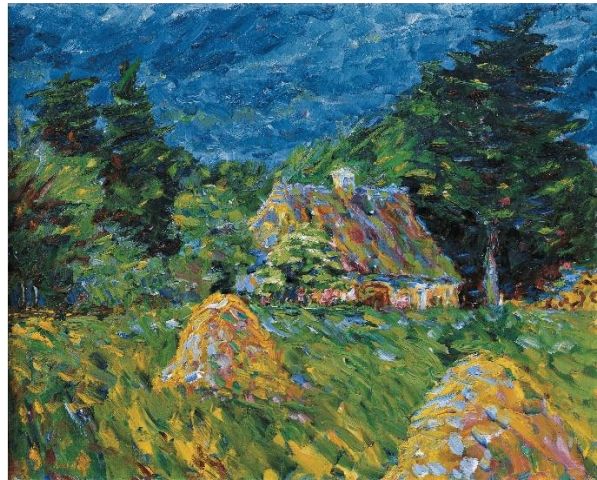
PRESS PHOTOS 69TH ANNUAL EXHIBITION SEEBÜLL 2025

EMIL NOLDE – "HUMAN BEING AND ARTIST" IN BERLIN

The link to the press photos is available upon request from Ms. Paulsen at k.paulsen@nolde-stiftung.de.



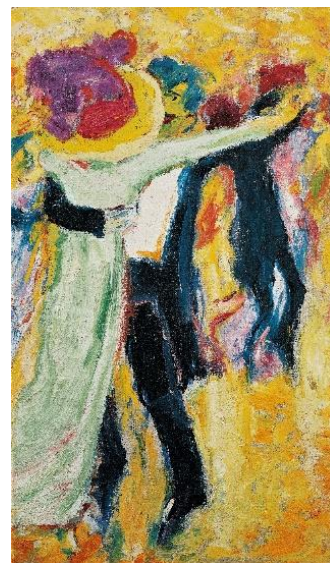
Emil Nolde, "Springtime in the Room"
1904, oil on canvas
© Nolde Stiftung Seebüll



Emil Nolde, "House by the Wood", 1908
oil on canvas, © Nolde Stiftung Seebüll



Emil Nolde, "Cabaret Audience", 1911
oil on canvas, © Nolde Stiftung Seebüll



Emil Nolde, "Dance II", 1911
oil on canvas, © Nolde Stiftung Seebüll



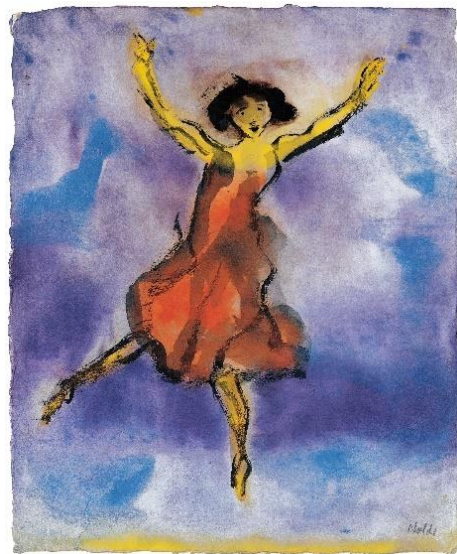
Emil Nolde, "Flower Garden (Marigolds)"
1919, oil on canvas
© Nolde Stiftung Seebüll



Emil Nolde, "Dancer and Harlequin", 1920
oil on canvas, © Nolde Stiftung Seebüll



Emil Nolde, Auerbach's Basement
(Bassermann as Mephisto)
1910/11, watercolour
© Nolde Stiftung Seebüll



Emil Nolde, Female Dancer (Red Dress)
1910/11, watercolour
© Nolde Stiftung Seebüll



Emil Nolde, Sanssouci
watercolour, © Nolde Stiftung Seebüll



Emil Nolde, Lion Reclining
watercolour, © Nolde Stiftung Seebüll



Emil Nolde, Two Parrots, 1923/24
watercolour, © Nolde Stiftung Seebüll