



TOUR ADA AND EMIL NOLDE'S SEEBÜLL

① VISITOR FORUM

A tour in Seebüll begins and ends in the entrance area of the **VISITOR FORUM**. Here you will find all the information you need and can register for guided tours and the painting school. In the **MUSEUM SHOP**, you will find literature, ceramics, fashion, and much more related to the art and world of Ada and Emil Nolde. The sanitary facilities, cloakroom, and lockers are also located here.

On the **UPPER FLOOR OF THE MUSEUM**, you will find biographical information about Ada and Emil Nolde, which can be further explored in the film **"MALER UND MYTHOS"** [Painter and Myth]. Additionally, this is where the Seebüll **PAINTING SCHOOL** is located, offering an impressive view of the wide marshland. Creative courses and workshops are regularly offered here.

② MUSEUM GASTRONOMY "ELEMENT"

Enjoy regionally and internationally inspired delicacies in the light-flooded "Element" or on the terrace with a view of the magnificent landscape of North Friesland.

③ NOLDE HOUSE

The Nolde House, built between 1927 and 1937 according to the artist's plans, is an architectural testament to his expressive style and stands out among modern artist houses. The living rooms have been preserved in their original, colorful design after careful restoration and technical upgrade from 2020 to 2022, giving a lively impression of the artist's way of life. Here you will find the annual **EXHIBITION**, showcasing an impressive selection of around 110 works, including oil paintings, watercolors, and prints.

④ NOLDE GARDEN

At the same time as the construction of their house in 1927, Ada and Emil Nolde laid out a magnificent flower garden, which remains a highlight of the museum today. A fascinating detail: The curved path through the garden follows the initials of the artist couple – A and E – which can be clearly seen in the layout. The lovingly laid-out perennial garden has been maintained with continuous care despite the harsh North Sea climate and reflects Nolde's deep passion for nature, repeatedly expressed in his artworks. The original plants and their offspring allow visitors to experience the garden in its original beauty – just as Nolde once designed it.

⑤ The thatched garden house, affectionately called **"SEEBÜLLCHEN"** by Nolde, was where the painter and his wife often drank tea and enjoyed the splendor of their garden's flowers.

⑥ The modern **BOTANICUM** is dedicated to the research and preservation of the authentic planting of the historic Nolde Garden. Visitors have the opportunity to purchase seedlings from Nolde's garden and take a piece of this unique place home.

EMIL NOLDE "HUMAN BEING AND ARTIST" IN BERLIN

The 69th Annual Exhibition 2025 is dedicated to Emil Nolde's understanding of city and countryside. The change is central in his life: the artist usually spent his summers in rural seclusion and his winters in the hustle and bustle of the capital, Berlin. The exciting images of Berlin's nightlife with dance, theater, and cabaret stand alongside enchanting animal watercolors from the Berlin Zoological Garden. Overall, more than 110 works showcase the whole of Nolde, with his fabulous flower representations, animated seas, and endless landscapes.

Visual artists at the beginning of the 20th century were magnetically attracted to one of the most important metropolises in Europe. Berlin, with its nightlife, dance, theater, and cabaret, also became a source of inspiration for Emil Nolde. Particularly in the years 1910/11, he artistically engaged with the metropolis. Max Reinhardt, director of the Deutsches Theater and the Kammer-spiele, gave Nolde complimentary tickets. In the dark



Emil Nolde, Sanssouci, watercolor

69th Annual Exhibition 2025



Emil Nolde, Zwei Flamingos [Two Flamingos], 1923/24, watercolor

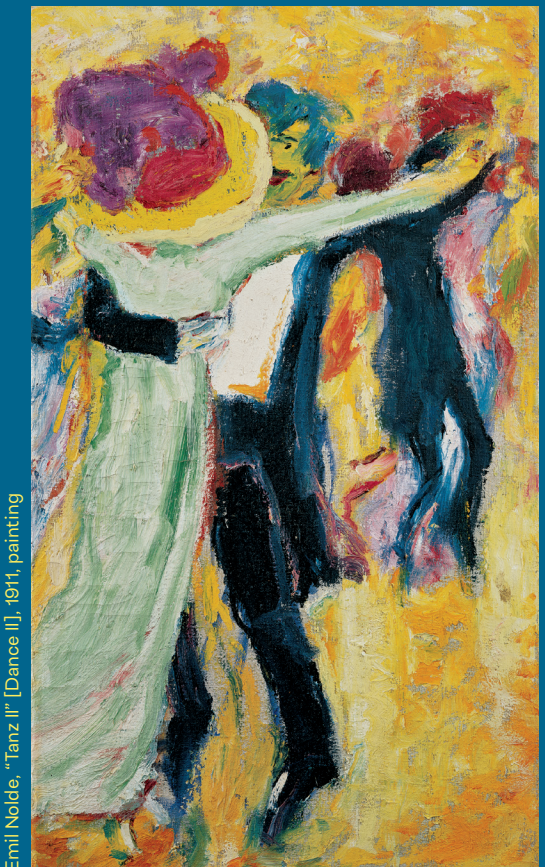
auditorium, Nolde, assisted by Ada, painted a series of well over 300 watercolors and ink brush drawings with quick, precise brushstrokes, focusing on the expressive possibilities of figures, their movements, dance, gestures, and poses. In his lively watercolors and radiant oil paintings, Nolde pays homage to the bustling city.

Since 1957, the **NOLDE MUSEUM SEEBÜLL** has shown an impressive selection of works, oil paintings, watercolors, and prints in an annually changing exhibition, which are exemplary of Nolde's work. Besides the well-known masterpieces, rare pieces from his extensive estate are also presented. With the world's largest collection of his works, Seebüll is the central place to deeply immerse oneself in the work of this significant artist.

1 March to 31 October, daily 10 am - 6 pm
NOLDE MUSEUM SEEBÜLL

TOTAL ARTWORK SEEBÜLL
2025

Nolde.



Emil Nolde, "Tanz II" [Dance II], 1911, painting

**NOLDE MUSEUM
SEEBÜLL**

EMIL NOLDE

The World-renowned Expressionist

Emil Nolde (1867-1956) is considered one of the most significant representatives of expressionism and one of the most outstanding watercolorists of his time. The farmer's son, who named himself after his birthplace, Nolde, gained worldwide recognition through his works. With an incomparable intensity and vibrant use of color, he created paintings and watercolors that capture the emotions and dynamics of the moment in an impressive way.

His art reflects both the influences of his travels – including an expedition to the South Seas in 1913/14 – and his deep connection to the North Frisian marshlands. This distinctive landscape not only shaped his life path but also decisively influenced his work.

In Seebüll, his final place of residence and creativity, Nolde left behind an artistic legacy. The **NOLDE MUSEUM SEEBÜLL** offers annually changing exhibitions that provide fascinating insights into the life and work of this extraordinary artist. Visitors can experience how Emil Nolde pushed the boundaries of painting with his art and created a new, color-intensive visual language that continues to impress to this day.



“This is our place!” exclaimed Ada and Emil Nolde joyfully when they finally found the patch of earth they named Seebüll in 1926 after a long search.



THE NOLDE GARDEN

Paradisiacal Bloomage

When Emil Nolde acquired Seebüll in 1926, the mound was surrounded by green grassland. With much dedication, Ada and Emil Nolde transformed this area into a blooming paradise. By mixing clay sods (drained silt), sand, and peat, they improved the soil quality to provide optimal growth conditions for flowers, perennials, shrubs, as well as fruit and vegetable plants.

Today, visitors can expect an unparalleled sea of colors, which presents itself anew with the changing seasons. The abundance of blossoms and variety of shapes reach their peak in mid-summer, from mid-July to mid-August. The historic garden hosts around 500, partly very old, perennials, complemented by annual and biennial summer flowers. Particularly well-known plants in the Nolde garden include Turkish poppy, delphinium, iris, primrose, peony, and lupine.

For those who want to take a piece of this paradise home with them: seedlings and seeds from the Nolde garden are available on-site.

SEEBÜLL

The Gesamtkunstwerk [Total Work of Art]

Emil Nolde fulfilled his dream of a total artwork at Seebüll, uniting art, nature, and architecture. It was his express wish to make his artistic work, his house, and the splendid garden accessible to guests. Ada and Emil Nolde stated in their will that Seebüll should be a “special place” where “seeking, spiritual wanderers from all lands” could find happiness and artistic rejuvenation.

The **NOLDE MUSEUM SEEBÜLL** offers much more than an art experience. Nestled in the idyllic landscape of North Frisia, near the gates of the island of Sylt, it invites visitors to linger with its art and colorful flower garden. Families can also enjoy an imaginative playground that provides space for creativity.

The light-flooded painting school, with its panoramic view over the marshlands, inspires creative work. The surrounding area features charming walking paths and the nearby bathing spot Hülltofter Tief, inviting nature lovers to relax.

After a tour of the museum, the museum's gastronomy completes the visit with regional and internationally inspired delicacies.

The **NOLDE MUSEUM SEEBÜLL** is a place that harmoniously combines art, nature, and culture into an overall experience and fascinates visitors from around the world with the creative power of Emil Nolde and his life's work.



OFFERS FOR GROUPS

Experience Art, Nature, and Creativity

The **NOLDE MUSEUM SEEBÜLL** offers a variety of opportunities to discover art and nature in a special way. In addition to regular public art and garden tours, groups can book exclusive tours of the exhibition or the Nolde Garden. Be inspired by the fascinating life story and impressive work of Ada and Emil Nolde. Whether for adults, school classes, or kindergarten groups – the content is tailored to your needs.

For particularly creative experiences, we offer custom workshops and courses in the light-filled Seebüll painting school. This offer is aimed at adults, teenagers, and children alike. The content, duration, and difficulty level can be flexibly planned. Whether a multi-day painting school project, a full-day workshop, or an intensive three-hour course – you will experience unforgettable hours full of inspiration and creativity with us.

We are happy to advise you on your individual group experience and assist with planning. Make your visit to the **NOLDE MUSEUM SEEBÜLL** a special highlight!

ADMISSION PRICES

ADULTS	€ 12
REDUCED (with proof)	€ 8
GROUPS (10+ persons) per person	€ 10
CHILDREN (up to 6 years)	free
PUPILS (7 years and older) and students	€ 8
FAMILY TICKET (2 adults, 3 children)	€ 24
COMBINATION TICKET TØNDER	€ 18
in cooperation with <i>Kunstmuseet i Tønder</i>	
ANNUAL PASS SEEBÜLL (non-transferable)	€ 50
PUBLIC TOUR	€ 3

ACCESS

The visitor forum and the Nolde garden are fully accessible without barriers. The Nolde House also offers step-free access. Dogs are warmly welcomed in Seebüll, but access to the historical Nolde House is only permitted for certified assistance dogs.

TOURS AND PAINTING SCHOOL

Please register at besucherservice@nolde-stiftung.de

MUSEUM GASTRONOMY “ELEMENT”

Gastronomy – Delicacies – Events
+49 (0) 4664-98 39 70, info@element-seebuell.de

MUSEUM SHOP

Discover unique gift ideas inspired by Emil Nolde's art.

NOLDE MUSEUM SEEBÜLL

Stiftung Seebüll Ada und Emil Nolde

Seebüll 31, D-25927 Neukirchen
+49 (0) 4664-98 39 30
info@nolde-stiftung.de
nolde-museum.de

1 March to 31 October 2025

Daily 10 am - 6 pm

Visit us on
Instagram & Facebook
and subscribe
to our newsletter!

